

AXC-800 III

X-RAY COMPONENT COUNTER

SCIENSCOPE
INTERNATIONAL



AXC-800 III Component Counting System

The ScienScope Award-Winning AXC-800III is the third generation of the revolutionary X-ray component counter. By utilizing the state-of-the-art X-Ray technology and intelligent AI algorithm, the AXC-800III captures the images of the components inside the reels and uses AI to count the quantities. The AXC-800III is capable of counting down to 01005 with an accuracy of 99.9% in less than two seconds per reel. The patented ScienScope optical barcode scanner deciphers the barcodes simultaneously. The results can be uploaded to the MES system in real-time, and a new label will be generated automatically while the reels are being removed from the machine.

Applications

- Tubes
- JEDEC Trays
- 7", 13" and 15" Reels
- Loose Wound Components
- Sealed ESD Bags
- Tightly Wound Components
- Cut Strips
- BGA Ball Count



FEATURING

- **Incoming mode, scan label, check MES, receive UID print and place the new label**
- Turnkey operation (5-minute operator training)
- Scanning of (4) 7" reels simultaneously
- Fast, Intuitive, user-friendly AI software interface with 99.9% accuracy
- MES Intergration (optional)
- Internal Barcode Scanning, no more mixed match barcodes due to operator error
- Small footprint
- Industrial PC: Microsoft Windows 10 (64-bit)



WWW.SCIENSCOPE.COM

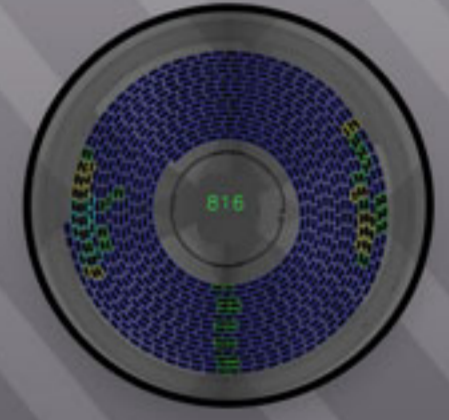
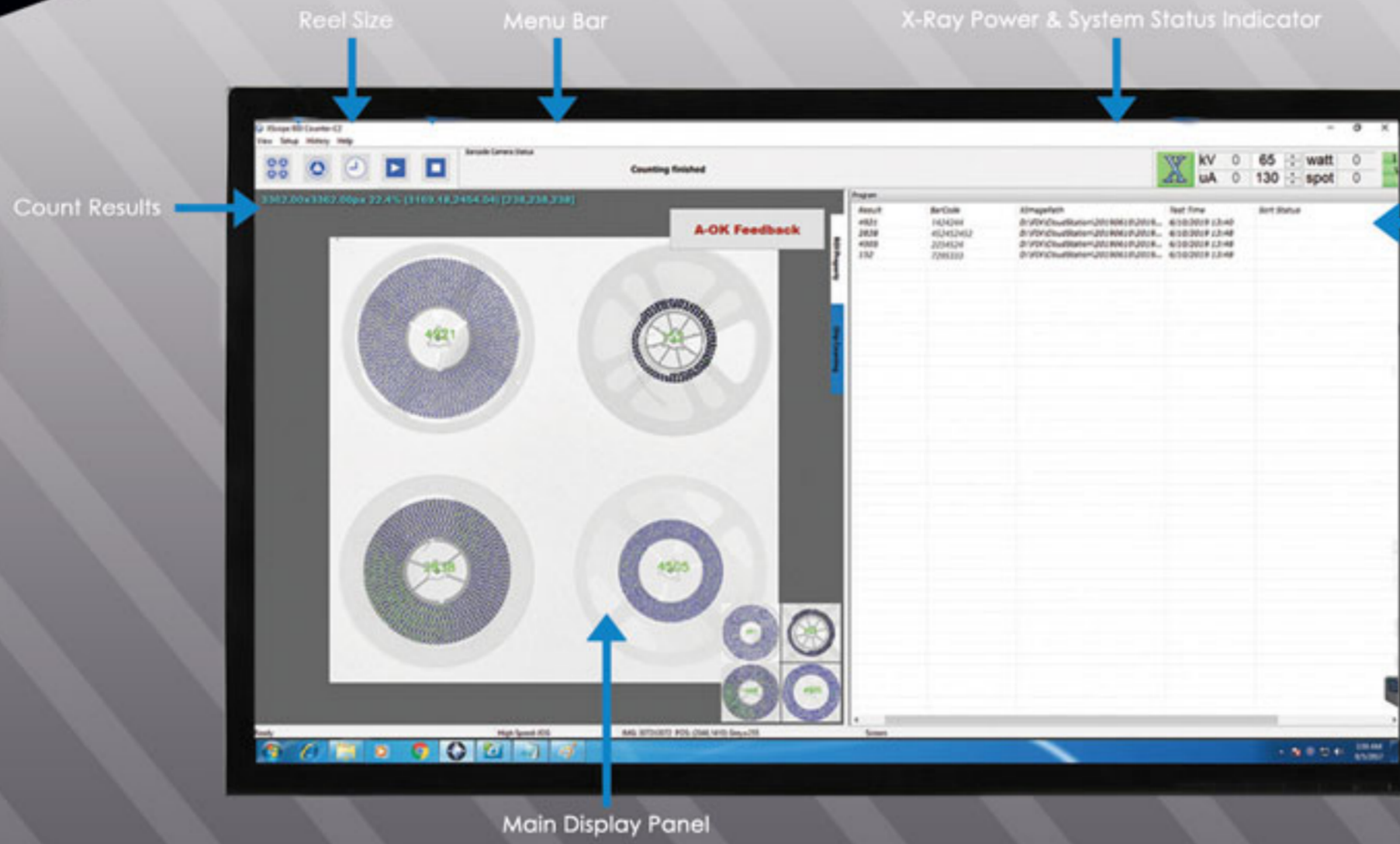


1(800)216-1800
info@scienlescope.com



5751 Schaefer Ave
Chino, CA 91710, USA

PRODUCT SPECIFICATIONS



MACHINE SPECIFICATIONS

Technical Operator

- Compatible Reel Sizes: (1-4) 7" reels, (1) 13" or 15" reel with a maximum of 74mm reel height
- Minimum Component Size: 01005"
- Count Accuracy: $\geq 99.9\%$
- Types of Inspection: Standard SMT and TH, Standard reels up to 15" diameter, Cut Strips, ESD Bags, JEDEC
- Internal barcode scanning camera.
- Label printing: Software interface for automatic label printing of barcodes/ component count results. (Label printer optional)

X-Ray Tube

- X-Ray Source: Maintenance free, integrated (closed)
- Maximum Power: 50w

Flat Panel Detector

- Size: 17" X 17"

General Machine Specs

- Dimensions: 63" x 44" x 81" / 1600mm x 1117mm x 2057mm
- Weight: 616kg / 1360 lbs.
- Power: AC 100 - 240 VAC 47/63 Hz 0.8 kW
- Industrial PC Microsoft Windows 10 (64-bit)

THIS SYSTEM INCLUDES A 1 YEAR WARRANTY ON PARTS AND LABOR

Compliance

THE SCIENSCOPE X-RAY COMPONENT COUNTER SYSTEMS MEET THE FDA-CDRH REGULATION CFR 21 1020.40 SUBCHAPTER J FOR CABINET X-RAY SYSTEMS. THE FDA-CDRH STANDARD FOR CABINET X-RAY SYSTEMS STATES THAT RADIATION EMISSIONS WILL NOT EXCEED 50 MICRO R/HR 5 CM FROM ANY EXTERNAL SURFACE. THE X-SCOPE X-RAY INSPECTION SYSTEMS TYPICALLY HAVE A RADIATION EMISSION READING OF LESS THAN 20 MICRO R/HR 5 CM FROM ANY EXTERNAL SURFACE. ALL SCIENSCOPE X-SCOPE X-RAY SYSTEMS HAVE A CE APPROVAL. SCIENSCOPE X-SCOPE X-RAY SYSTEMS ARE CLASSIFIED AS "CABINET X-RAY SYSTEMS" AND REQUIRE NO EXTERNAL RADIATION SHIELDING. WELDED STEEL / LEAD-STEEL CONSTRUCTION, NO VISIBLE SHIELDING.

FDA ACCESSION NUMBER: 0710198 CE REFERENCE NUMBER: CN.CE.0402-05.09

